



PINE VALLEY VILLAS

BY RH PRIVÉ



Master Plan





Nature's dialogue

Welcome to a
new way of living

where luxury, state-of-the-art design
and nature connect,
where basic geometric lines
take on a new dimension.

In all the document are Computer-Generated Images. Without contractual value. It represents a non-definitive approximation to the final design that we are still working on for you and that we will specify in the final project available when the purchase contract is signed.

Under the philosophy of "Less is More", the design conveys the search for pure, elegant and gentle lines.

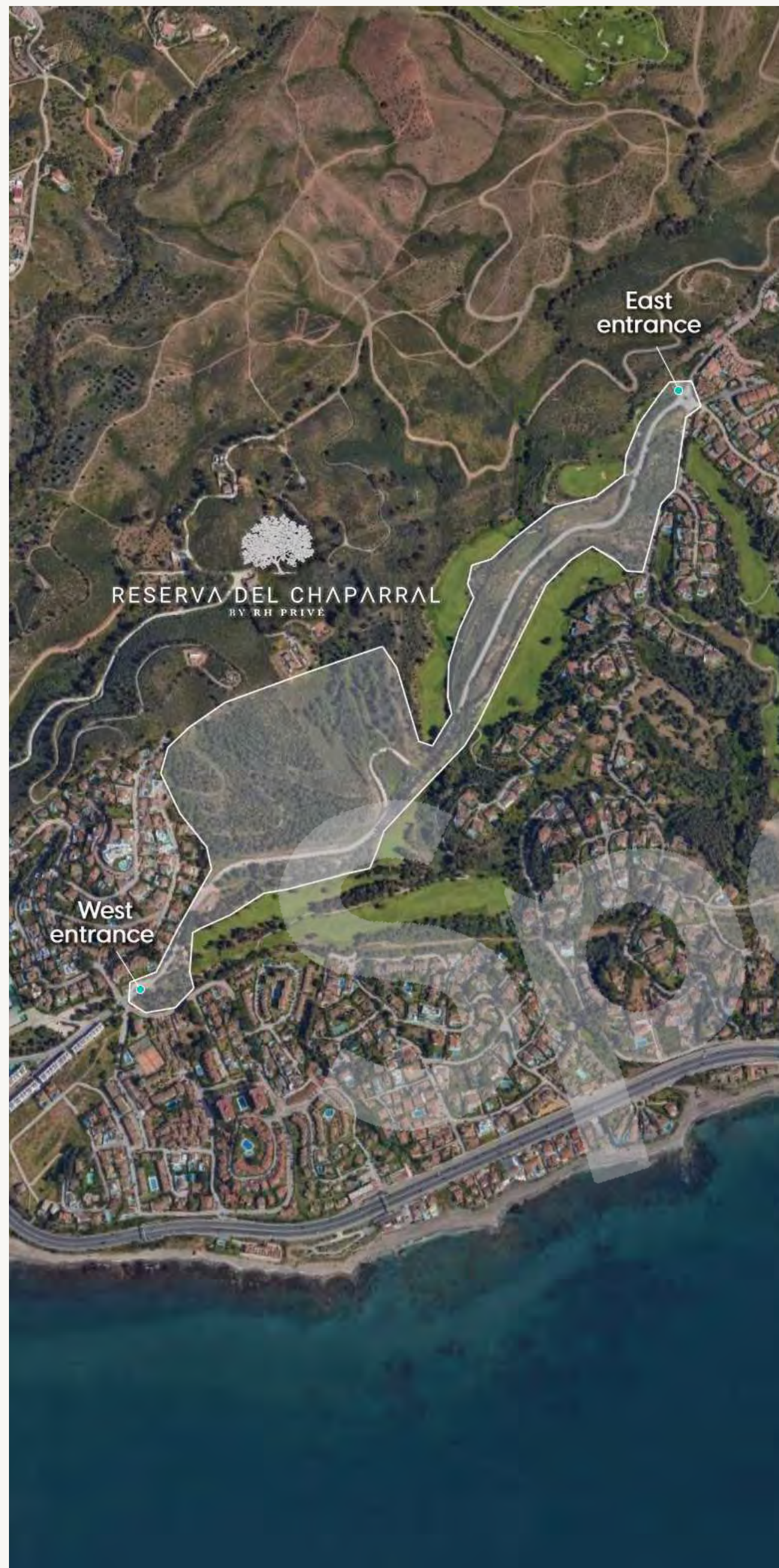
Starting from the traditional silhouette of a house, the primordial pentagon, the design team has evolved these geometric lines to create a symbiosis with the existing vegetation, establishing a continuous dialogue with nature, its energy and its movement.

This is how the central axis that configures the traditional sloping roof of the house breaks and moves one of its edges, dancing to the rhythm of the wind breeze. This generates a distinction between each villa, creating a unique skyline on the Costa del Sol.



RH Privé, as the leading eco-developer on the Costa del Sol, launches with Pine Valley Villas its first project in Reserva del Chaparral.





Location

Same essence,
new concept

RH Privé, following the unquestionable success of Reserva del Higuierón, introduces the latest luxury community with the most potential area.



RESERVA DEL CHAPARRAL
BY RH PRIVÉ



PINE VALLEY VILLAS

Halfway between Marbella and Málaga and less than 500 meters from the coast of Mijas, Reserva del Chaparral features more than 300,000 m² of extension surrounded by a lush forest, the only one of its kind on the entire coast. The community also borders the Chaparral Golf Club, one of the best rated golf courses in the area, considered to be in the top 50 in Spain.



With the same essence and high standards of quality and exclusivity that RH Privé guarantees, and the more than 30 years of history of El Chaparral, this new luxury community meets the international requirements of a select group of High-level clients.



Beyond expectations

Pine Valley Villas have been designed as open and versatile spaces.

The spatial continuity is encouraged by blurring the lines between the indoor and outdoor areas in order to emphasize the views of the golf course and the blue line of the sea, surrounded on both sides by an exuberant pine forest.

Constant search for natural light and its maximum use is materialized in the villas through the presence of large windows in all rooms, especially in the façade, where the glass of the sliding windows dominates the structural prominence.





The welcoming
and lush garden
is completed with
an infinity pool

where the terrace floor floods the
pool, following the pure lines of the
entire project.





The Master Plan
of Pine Valley
Villas highlights
exclusive corner
villas featuring a
bespoke design.

Gated community

protected by a video surveillance
system with cameras around the
perimeter of the whole development.

The use of warm and noble materials constitutes the ethos of these villas.

Materials such as natural wood have been used in selected areas of the villa's cladding, allowing a constant dialogue with the natural landscape around it, and unquestionably bestowing on the project the uniqueness, elegance and purity that defines Pine Valley Villas.

The staircase, designed and built as a piece of sculpture, elevates the living area to become an exclusive art gallery.







3 and 4-bedroom villas have been designed to optimize the spaces and the relationships between the different areas.

Customization Program

Pine Valley Villas utilizes the Exclusive Customization Program specially designed by RH Privé.





Each home is unique, meeting the tastes and needs of its owners. Thanks to our rich catalog of choices of finishes, homeowners can find different options for flooring and tiling, fittings and toilets, as well as different finishes for kitchen furniture and extras to give a touch of distinction to the villa.

Please contact our team for more information.

Setting the standards

State-of-the-art design, luxury and nature as interlocutors.

Letting this dialogue flow, without limits, the RH Privé team has been able to apply the elegance and purity "Less is More" philosophy creating an instantly iconic skyline.

Pine Valley Villas is the first development located in the most abundant natural environment of the Costa del Sol, setting the standards of luxury and quality of RH Privé.

Reserva del Chaparral promises to be one of the most vibrant and exclusive community in southern Europe.



Owners membership

Reserva del Chaparral

Owners of the exclusive Reserva del Chaparral community will receive an Owners card to access the Chaparral Private Club and benefit from its unique services.

We highlight the reservation system designed by RH Privé, which allows members to access specific areas privately, sharing the space only with members of their choice or alone.



CHAPARRAL PRIVATE CLUB

A unique building located at Reserva del Chaparral's east entrance.

Social-Gourmet Experience

- Lounge area
- Cocktail bar
- Exclusive restaurant with indoor and outdoor areas
- Owners' Experience: Private restricted area where owners can use their private wine cellar or the outdoor kitchen, fully equipped for show cooking

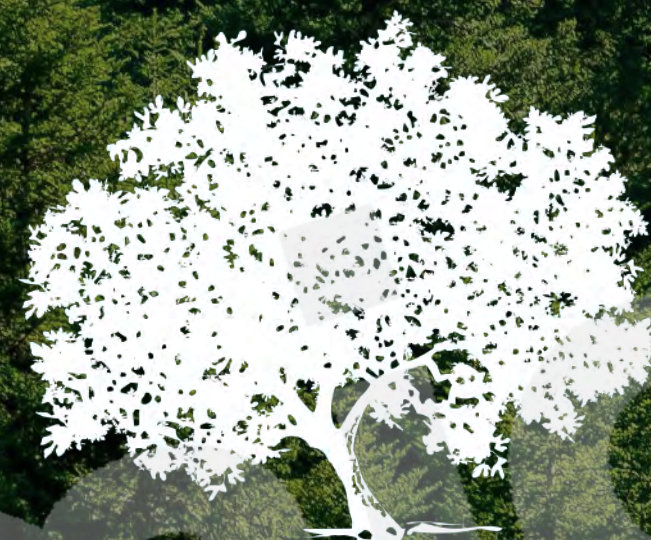
Golf

- Exclusive benefits at Chaparral Golf Club

Wellness and Fitness area

- Heated outdoor swimming pool with countercurrent swimming
- *Karesansui*; Zen garden and outdoor meditation and yoga areas
- Mediterranean gardens and children's play area
- Spa facilities with Hammam, Sauna and hydrotherapy circuit
- Gym and multi-activity area equipped for indoor yoga





sparrh.no

SPARRH
PRIVÉ

ECO LUXURY
DEVELOPMENTS